

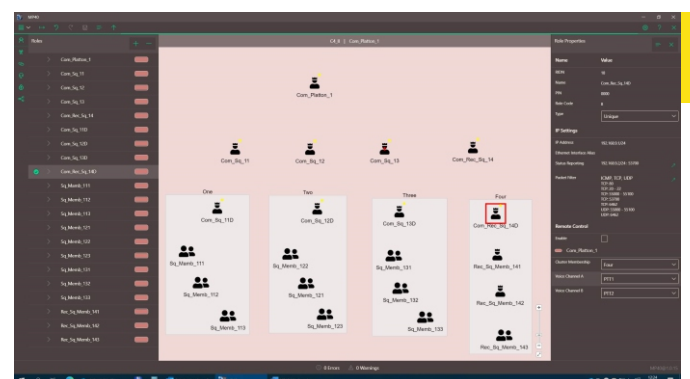
MP40 Mission Planner

The MP40 Mission Planner application is intended for configuring and programming the RF40 radio system according to current operational needs. The software runs on 32- and 64-bit Microsoft Windows operating systems.

MP40 is designed to relieve the user from the non-essential technical details of radio configuration. The parameters specified are automatically checked and, if necessary, warning or error messages are displayed, and the application prompts the user to make the appropriate adjustments.

It allows to:

- Create operating missions
- Design various networks within those missions
- Set up roles of the individual radios in the mission and assign them to networks
- Manage cryptographic keys assigned to the mission
- Interconnect radio networks and connect external IP networks
- Create clusters for increasing the maximum number of network users
- Specify and connect varied accessories like headsets, power amplifiers, intercoms, etc.
- Export the created mission for direct upload to radios



Network Structure Diagrams

The following details can be configured:

Missions

- Mission name
- Mission access PIN
- Status Reporting ports
- IP Remote control ports

Networks

- Waveform type (FM, AM, WF40 MANET)
- Frequencies
- Over-the-Air Network IP address
- Assigned crypto keys
- Opened clusters (subnetworks allowing for theoretically unlimited number of network users)
- Assignment of roles to be used in the network
- Multicast groups

Roles

- Role name (e.g., SQ1_Commander or COY2_Member3) of the particular radio
- Role Access PIN (only authorized user can switch the radio to the role)
- IP address of the radio Ethernet interface
- Status Reporting address (DTE for fetching the PLI and network information data)
- Packet Filter (detailed specification of allowed ports and protocols to filter-out the unwanted IP traffic from the radio)
- Remote control enable/disable
- Remote screen enable/disable
- Cluster membership
- Function of PTT1 and PTT2 keys (Voice channels assigned)

Network interconnects

- Interconnect name
- Interconnect type (Direct / Routed)
- Traffic type (Voice / Data / Voice+Data)
- RTP ports for individual voice channels
- Router interfaces IP addresses

Accessories

- Accessory name
- Accessory audio profile
- Combination and assignment of accessories to roles

The mission configuration file generated by the MP40 Mission Planner can be uploaded to the radio using FG40 Fill Gun, Ethernet cable or USB Flash Drive.

